

Answers to  
Unit 8  
Review

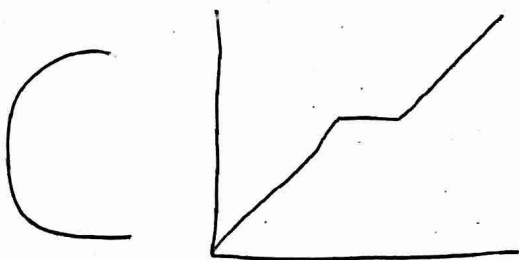
5  
or  
 $5 \times 10^0$

$100^0$

About  
4

$9.5 \times 10^{14}$

$10^6$   
or  
 $1 \times 10^6$



23,830  
or  
 $2.383 \times 10^4$

B. 3

(3, -1)

X = 6

$\frac{6}{11}$

# 126

About 9

A. # 1 less

D.  $4y = \left(\frac{1}{2}\right)^x - 5$

D \$37.50

B

X	Y
-1	5
1	1
3	-3
5	-7

About  
11 miles

24 miles

$5^4$

Graph  
B

$4^{13}$

$\frac{1}{4}$

5

.0032